

Urban Agriculture World Summit in Nerima

Disseminating the appeal and potential
of urban agriculture to the world

Event period:

2019 November 29 Fri ▶ December 1 Sun

Participating 5 overseas cities



New York London Jakarta Seoul Toronto



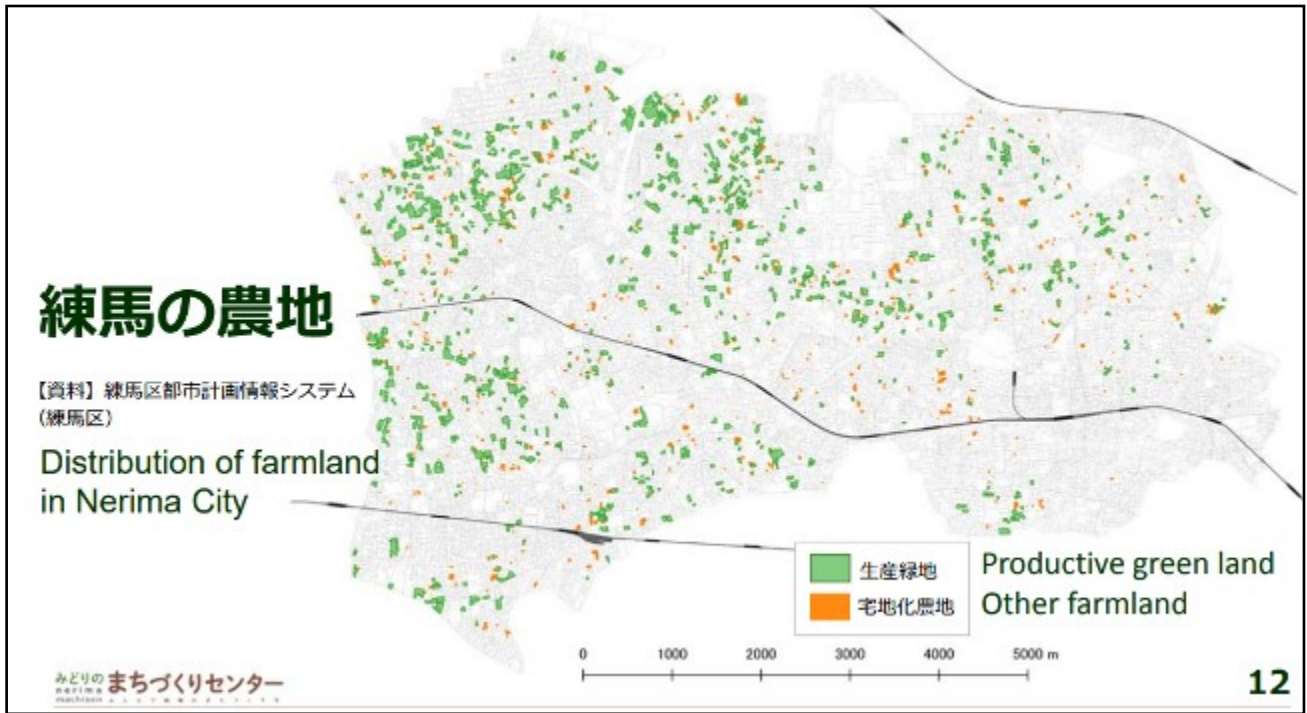
**Book 1: Urban Agriculture
Policy and Municipal
Support**

Book 2: Farm profiles

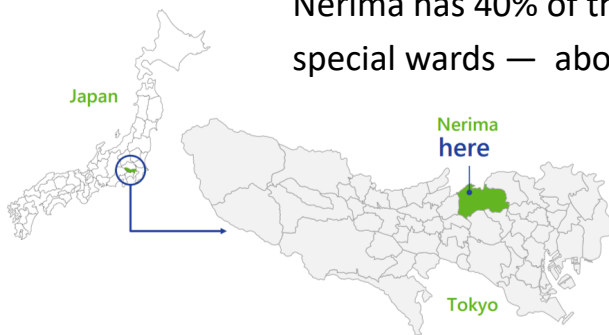
Book 3: Events and Engagement

From November 29 to December 1, 2019 the City of Nerima in Japan hosted representatives from five cities around the world to exchange ideas and demonstrate the benefits of growing food in the city.



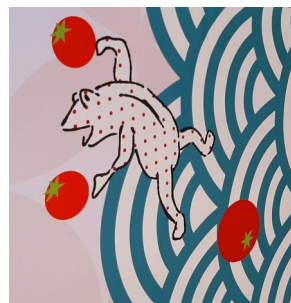


Nerima has 40% of the farmland in metropolitan Tokyo's 23 special wards — about 300 football fields.



A small slice of policy

Urban Promotion Areas were established in the federal City Planning Act of 1968 to address a population boom and urban sprawl. This led to increased pressure on urban farmlands.



Farmers mobilized to protect farmlands and the Productive Green Lands designation was created in 1992. Land owners could receive lower property and inheritance tax rates if they committed to maintaining productive farms for 30 years.

This legislation will expire in 2020.

Climate

At the very end of November, many plants were still going strong with no frost kill, such as cabbages, daikon radishes and kale. This photo shows onion seedlings just getting started!



The City of Nerima's support for urban agriculture

Agricultural School

City of Nerima began the Agricultural School in 2015 to help aging farmers. The site is owned and operated by the City, the instructors are local farmers paid by tuition fees of 10,000 yen (\$120 CAD per year).

Only Nerima residents are allowed into the program, they must write an essay stating why they want to join. Many of the volunteers are in their 50s and 60s, 40% are women. Volunteers attend 20 sessions per year, consisting of two in-class sessions and 18 hands-on sessions.



Every six months they are assigned new teachers in order to learn different production methods. This makes it easier to adapt to a new farmer's approach once they're placed. The farm is open five days per week, trainees are welcome to come and work any time outside of classes. After one year, volunteers become certified agriculture supporters and are placed with a farm. They can study for up to three years.

Five participants talked about why they joined the program. One 75-year-old is currently supporting two farms, working six times per month. Another person farmed this land before it became the Agriculture School and wanted to be involved in preserving it as a green space. A young person said that they used to play in the fields in Nerima, now half of it is paved over.

Allotment gardens

Private owners are prohibited by law from renting spaces designated Productive Green Land, but municipalities are permitted to "rent" the land from owners at no cost and then sub-lease land to gardeners. In Nerima, there are 26 allotment gardens with 1,741 plots, either 15 or 30 square metres in size. Plots are allocated by lottery for terms of just under 2 years. 45% of people who enter the lottery get plots.

